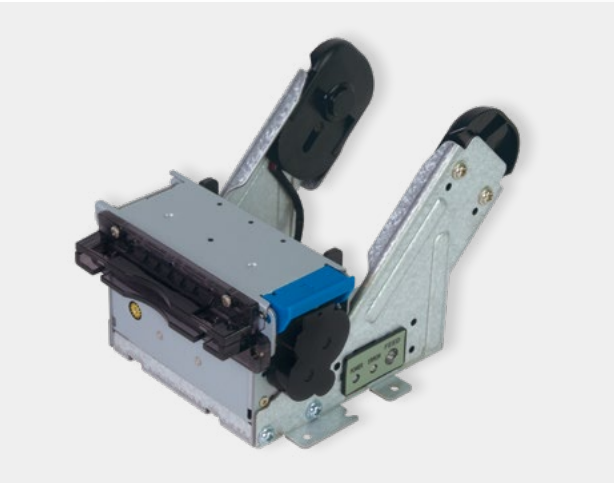


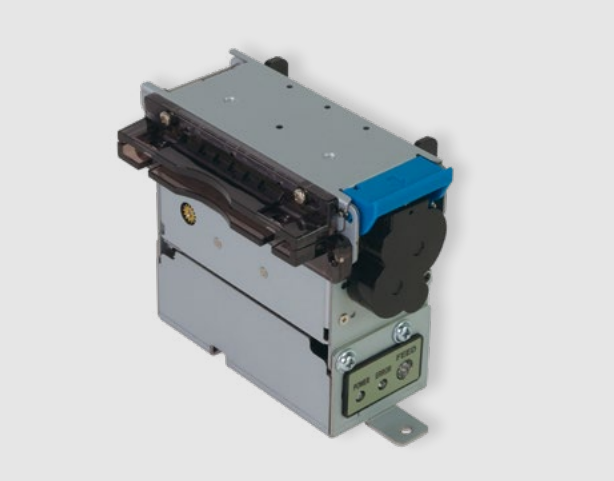
PRODUCT
056 SERIES



	HMK-056			
	W	H	D	Weight (g)
Φ100	98.78	165.63	91.8	502
Φ120	98.78	193.63	110.1	537



	HMK-056			
	W	H	D	Weight (g)
Φ100	98.78	177.66	91.8	531
Φ120	98.78	205.66	110.1	566

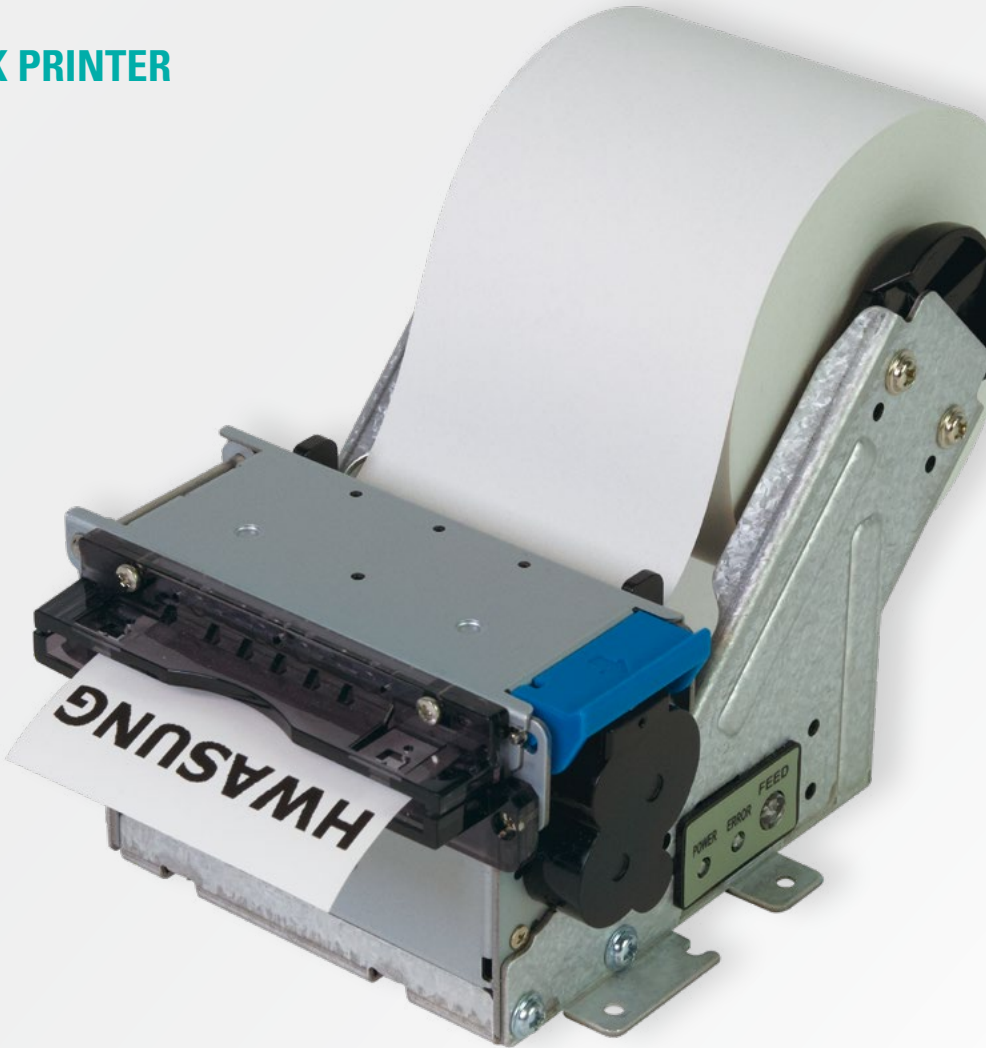


	HMK-056U			
	W	H	D	Weight (g)
	102.96	59.52	81.3	381

056 SERIES

SLIM & COMPACT

Reciept | Ticket **2-inch KIOSK PRINTER**



- RECIEPT
- TICKET



- Fast Print Speed up to 200 mm/s (MAX)
- Ultra Slim and Compact Design
- 98 x 136 x 92 (mm) (standard)
- Only 430 g (standard)
- Jam-Free



- High Quality Performances
- Powerful Cutting : Upto 120 μm thick paper
- Sensor Function :
Cover Open Sensor, Paper Detect Sensor,
Black Mark Sensor, Cutter Home Sensor,
Near End (Paper Low) Sensor

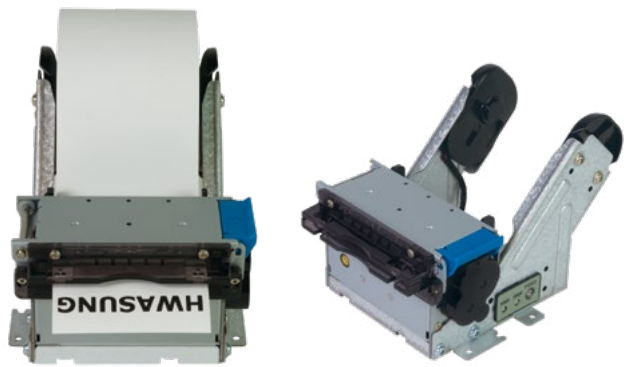


- User Centered Design & Customized Service
- 2 kinds of Mechanism Direction
- Paper Roll Diameter : Φ300 mm (MAX)

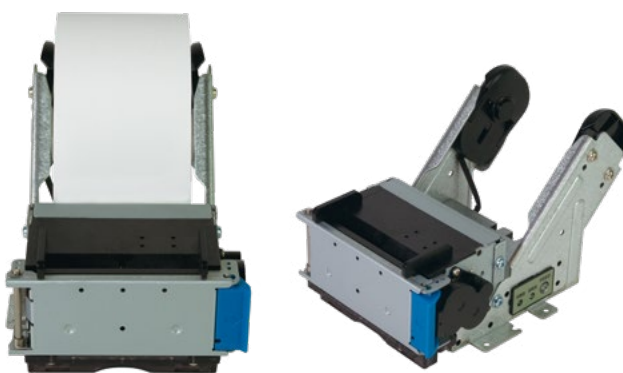
SERIES
LINE UP

056 SERIES

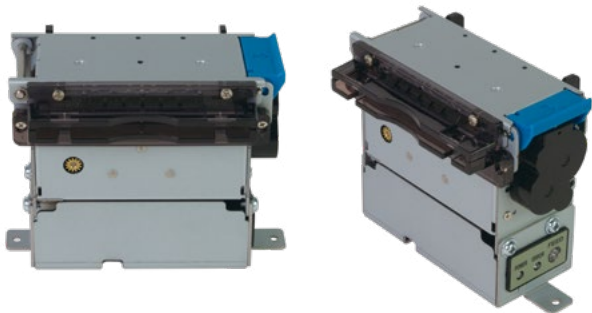
Reciept | Ticket **2-inch KIOSK PRINTER**



Standard (Horizontal / Lever)



Vertical Type



Ultra



Paper Extended

PRINT

Printing method	Thermal dot line printing
Cutter	Guillotine Type (Full, Partial)
Resolution	203 DPI
Printing speed	Max 200 mm/s

PAPER

Dots per line	448 dots
Paper thickness	50 μm - 120 μm
Paper width (mm)	60
Printing width (mm)	56
Paper outer diameter (mm)	100 (standard) up to 300 (max)

PERFORMANCE

Interface	Serial : RS232C	USB : USB2.0 Full Speed
Receiving Buffer	4 Kbyte	
SRAM	256 Kbyte (optional SDRAM 64 MB expandable)	
Flash ROM	2 Mbyte (optional 128 MB expandable)	

ENVIRONMENT

Temperature	Operating : -20 °C ~ 45 °C	Storage : -25 °C ~ 60 °C
	It is recommended to use the goods between 0 to 45 degrees, otherwise life may be shortened.	
Humidity	Operating : 40 ~ 85% RH (non-condensing)	Storage : 40 ~ 95% RH (non-condensing)

RELIABILITY (25°C, standard condition)

TPH(Thermal Printer Head)	100 km (100,000,000 Pulses)
Cutter	2,000,000 times

SOFTWARE

Emulation	ESC POS Available
Driver	Window driver, Linux/Mac CUPS Driver
SDK	Android SDK, Windows SDK, Linux SDK

FONTS & GRAPHICS

Font Size	Font A	(12 x 24) 1.50 x 3.00 (mm)	Font B	(9 x 16) 1.13 x 2.00 (mm)
	Kor A	(24 x 24) 3.00 x 3.00 (mm)	Kor B	(16 x 16) 2.00 x 2.00 (mm)
Characters per Line	Font A	37	Font B	49
	Kor A	18	Kor B	28
Number of characters	English 95		Extended characters (Code page) : 128 x 10	
Barcode	1D	UPC-E, EAN8, EAN13, ITF, CODABAR, CODE39, CODE93, CODE128		
	2D	PDF417, QR CODE		

SMPS rating

Input voltage	100V ~ 240V (AC)
Output voltage	24V (DC)
Output current	2.5A 60W