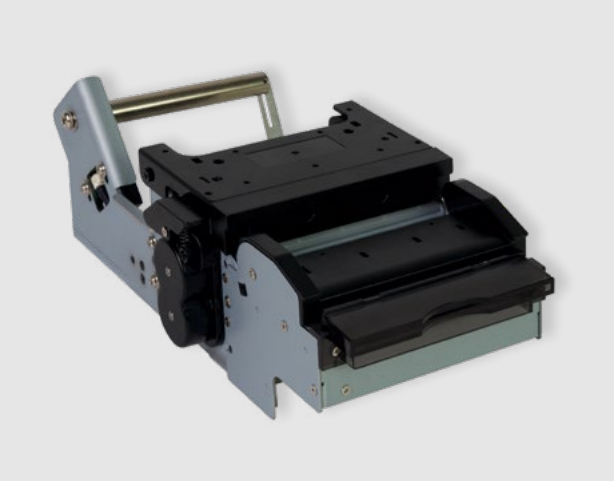
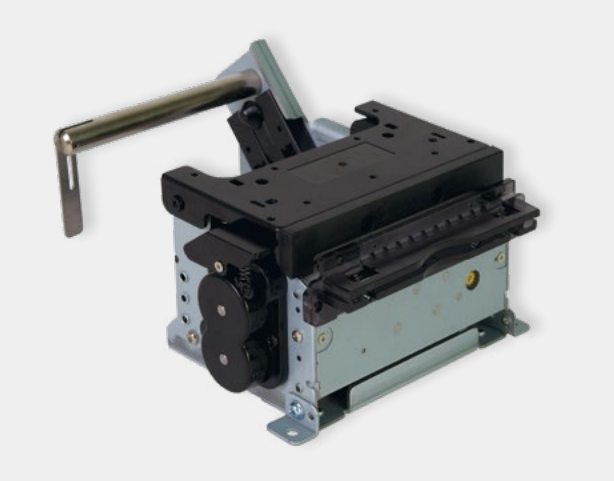


PRODUCT  
830 SERIES



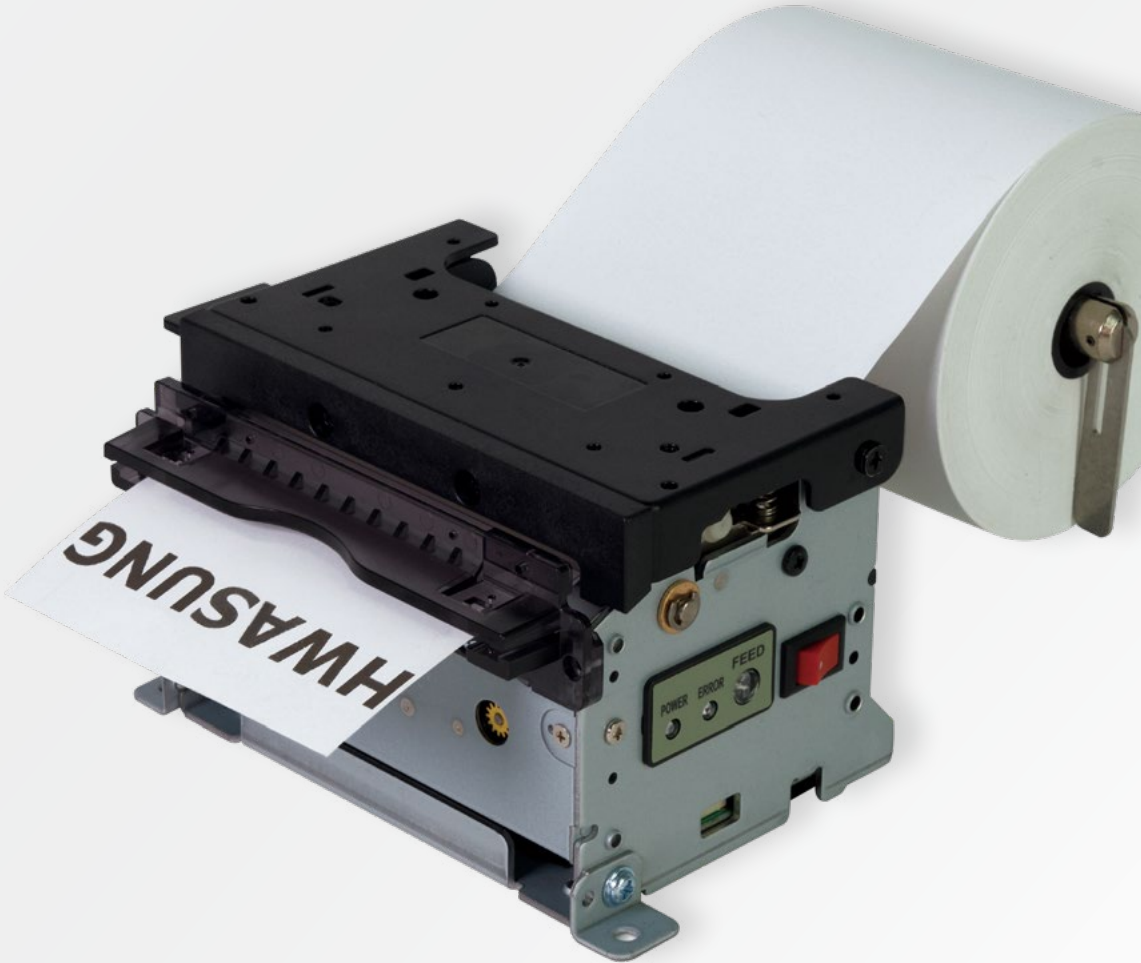
Shaft Arm(Standard)   HMK-830				
	W	H	D	Weight (g)
Φ100	119.9	174.6	110.8	847
Φ150	119.9	255.9	164.9	1072
Φ200	119.9	298.8	233.6	1222

No Arm   HMK-830U			
W	H	D	Weight (g)
119.9	91.3	73.3	662

Presenter   HMKP-830			
W	H	D	Weight (g)
119.9	228.6	110.8	1038

830 SERIES

Reciept | Ticket | Label 3-inch KIOSK PRINTER



- RECIEPT
- TICKET
- LABEL



- Fast Print Speed up to 300 mm/s (MAX)
- Powerful cutting up to 200 μm thick paper
- Jam-Free



- High Quality Performances
  - 16 greyscale supported
  - Resolution Upgrade (Option) : 300 DPI
  - Gap Sensor : Label and Linerless Label available
  - Presenter : 4 kinds of Functions

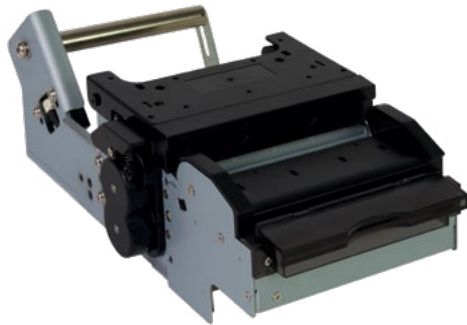


- User Centered Design
  - Paper width 25 ~ 82.5 mm (Adjustabel Type)
- Customized Service
  - Paper Holder Direction : Left / Right (Selectable)
  - Paper Roll diameter : Φ300 (MAX)

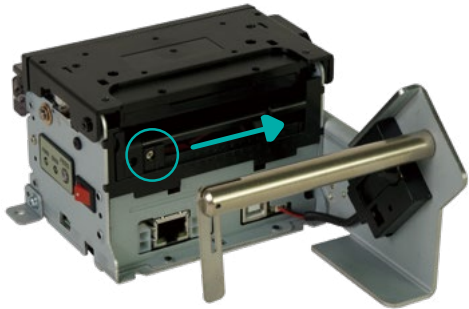
SERIES  
LINE UP

830 SERIES

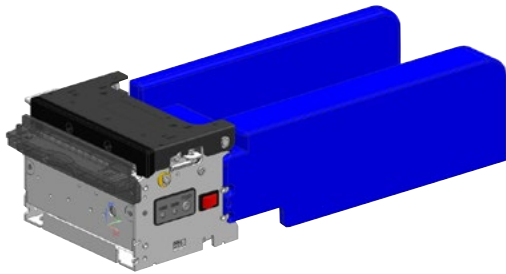
Reciept | Ticket | Label **3-inch KIOSK PRINTER**



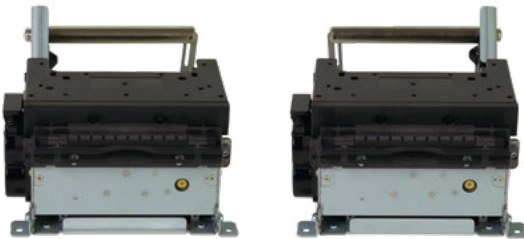
Presenter (Option)



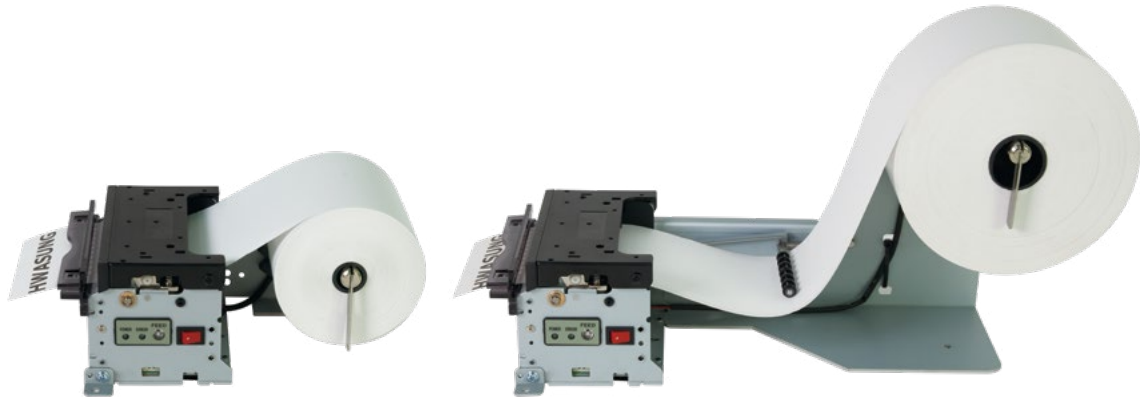
Adjustable Type (Option)



Fanfolder (Ticket)



Selectable Paper Holder Direction



Paper Roll Diameter Exnteded (Option)

PRINT							
Printing method	Thermal dot line printing						
Cutter	Guillotine Type (Full, Partial)						
Resolution	203 DPI, 300 DPI (option)						
Printing speed	Max 300 mm/s						
PAPER							
Dots per line	640 dots						
Paper thickness	50 μm - 200 μm						
Paper width (mm)	82.5	80	80	72	60	58	
Printing width (mm)	80	77	72	64	54	48	
Adjustable type width	25 mm - 82.5 mm						
Paper outside diameter (mm)	Φ100 (standard) up to Φ300 (max)						
PERFORMANCE							
Interface	Serial : RS232C	USB : USB2.0 Full Speed		Ethernet : IEEE 802.3i 10Base-T (10 Mbps)			
Receiving Buffer	4 Kbyte						
SRAM	256 Kbyte (optional SDRAM 64 MB expandable)						
Flash ROM	2 Mbyte (optional 128 MB expandable)						
ENVIRONMENT							
Temperature	Operating : -20 °C ~ 45 °C			Storage : -25 °C ~ 60 °C			
	It is recommended to use the goods between 0 to 45 degrees, otherwise life may be shortened.						
Humidity	Operating : 40 ~ 85% RH (non-condensing)			Storage : 40 ~ 95% RH (non-condensing)			
RELIABILITY (25°C, standard condition)							
TPH(Thermal Printer Head)	100 km (100,000,000 Pulses)						
Cutter	2,000,000 times						
SOFTWARE							
Emulation	ESC POS Available						
Driver	Window driver, Linux/Mac CUPS Driver						
SDK	Android SDK, Windows SDK, Linux SDK						
FONTS & GRAPHICS							
Font Size	Font A	(12 x 24) 1.50 x 3.00 (mm)			Font B	(9 x 16) 1.13 x 2.00 (mm)	
	Kor A	(24 x 24) 3.00 x 3.00 (mm)			Kor B	(16 x 16) 2.00 x 2.00 (mm)	
Characters per Line	Printing Width	80 mm	77 mm	72 mm	64 mm	54 mm	48 mm
	Font A	53	51	48	42	36	32
	Font B	71	68	64	56	48	42
	Kor A	26	25	24	21	18	16
	Kor B	40	38	36	32	27	24
Number of characters	English 95			Extended characters (Code page) : 128 x 10			
Barcode	1D	UPC-E, EAN8, EAN13, ITF, CODABAR, CODE39, CODE93, CODE128					
	2D	PDF417, QR CODE					
SMPS rating							
Input voltage	100V ~ 240V (AC)						
Output voltage	24V (DC)						
Output current	2.5A 60W						