

8. USB (User Interface)

Without using the Windows driver, you are able to check the printer status, and transmit / receive the data, by using USB Interface DLL (HwaUSB.DLL) and OCX driver (HwaUSB.OCX).

6-1) DLL Interface

Place the HwaUSB.DLL into the System32 folder or SysWow64 folder depending on your Operating System's bit version.

6-1-1) DLL (Funtions)

1)long `UsbOpen(LPCTSTR SelPrinter);`

Open the USB port to Printer Model "HMK-081".

- Parameters:
SelPrinter : Printer Model Name
- Return :
Open Normal: 0
Open Error: -3(negative)

2)long `PrintStr(LPCTSTR data);`

Prints String.

- Parameters:
data : String datas
- Return :
Print Normal : 1
Print Error : 0

※ To prevent the loss of data for the print timeout, please use the function 'NewRealRead' to check the status, and go to the next step, when it's normal.

3)long `PrintCmd(unsigned char data);`

Prints 1 byte of data. When printing big data spool, use the following PrintPacket Value to increase the transfer Speed.

- Parameters:
data : 1 byte data (0~255)
- Return :
Print Normal : 1
Print Error : 0

4)long `NewRealRead(void);`

Reads 1 byte of print status data using USB port.

- Parameters:
None
- Return :
Read Normal : Print Status Value
Read Error : -1(Negative)

5)long `PrintPacket(unsigned char *PacketBuf,unsigned long PacketLength);`

The sending data buffer outputs a USB port for the specified data length.

- Parameters:
PacketBuf : TransmitDataBuffer Pointer
PacketLength : Transmit data length (not to exceed up to 64 bytes)
- Return :
Normal Output : 1
Output Error : 0

※ Do not use functions other than those listed above as they are for debug.

※ For more information, download the sample program from our website.

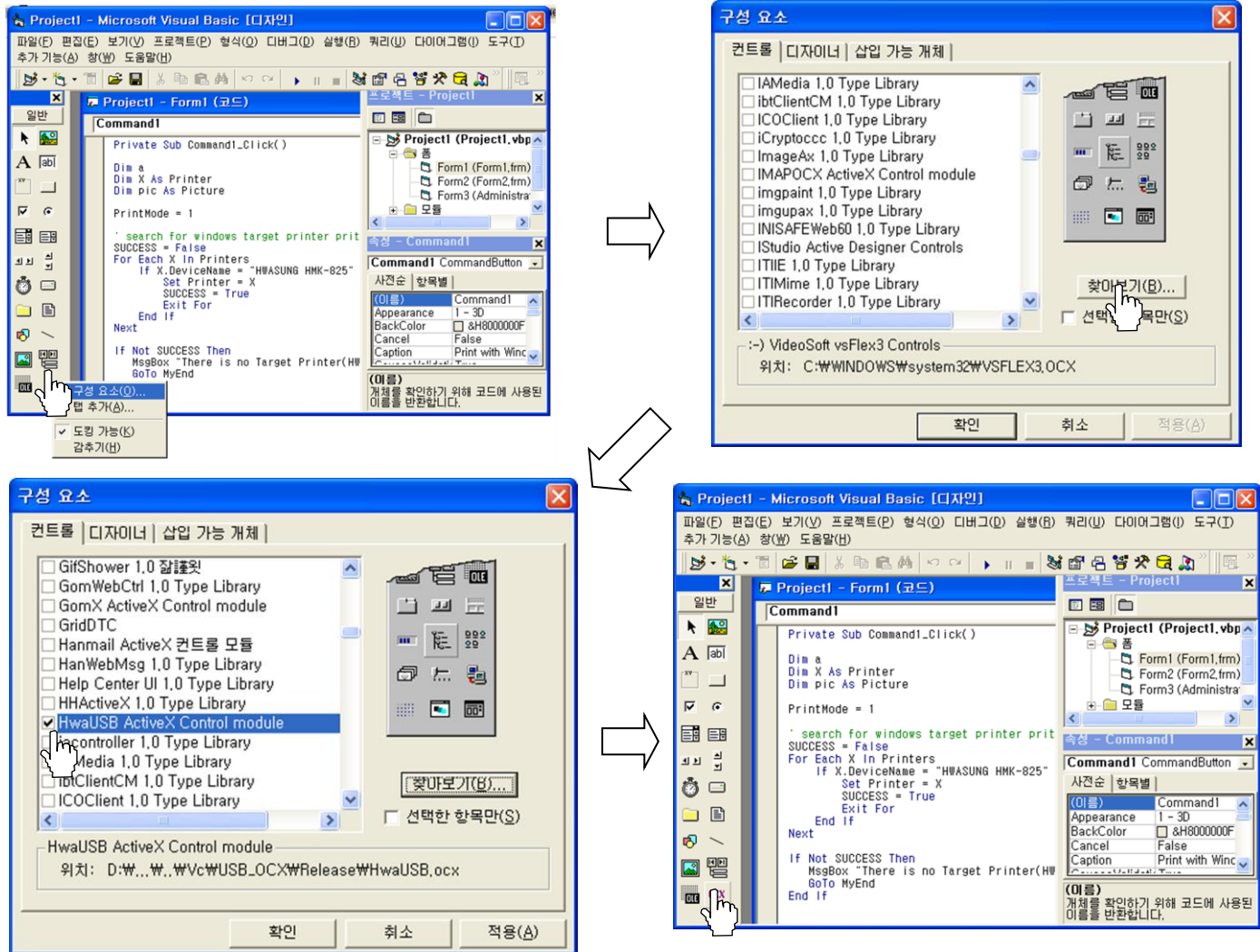
6-2) OCX Driver

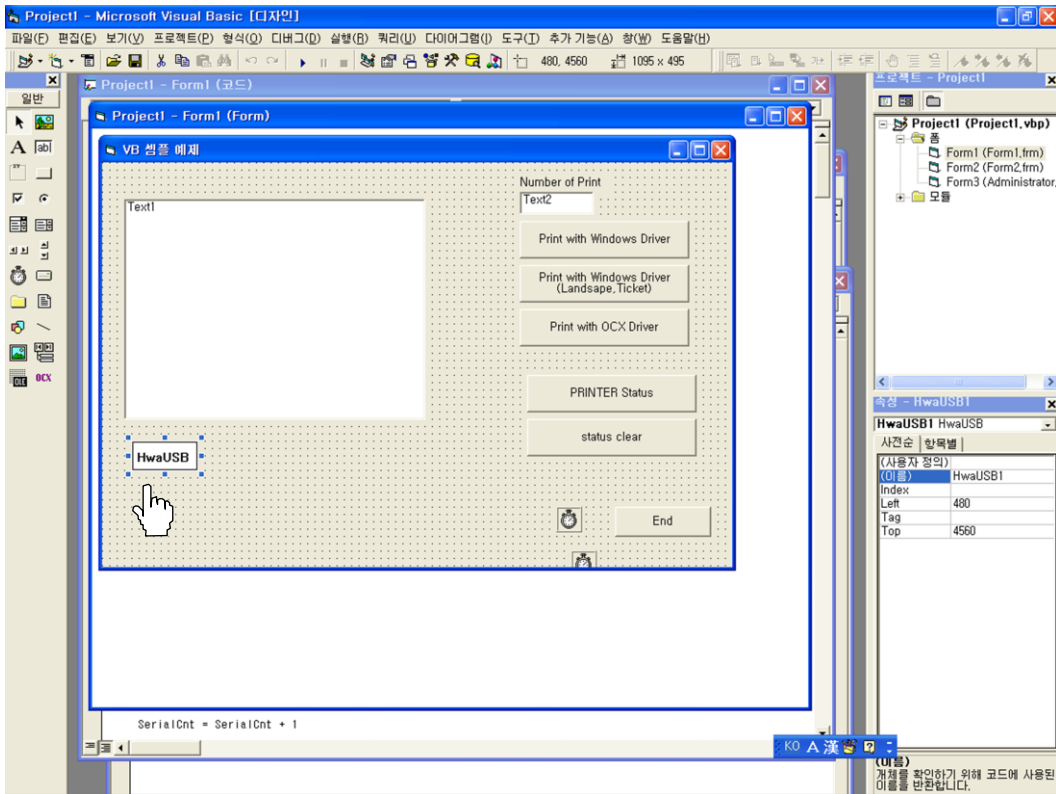
We recommend using DLL rather than OCX driver (future upgrades will be upgraded to DLL only)

6-2-1) Usage

Below is how to use it in Visual Basic.

- 1) Click on the component in the toolbox.
- 2) Under Browse, specify the provided file HwaUSB.OCX
- 3) Select HwaUSB ActiveX Control Module and press OK.
- 4) When step 3) has finished, a purple icon called OCX appears in the toolbox.
- 5) Click and drag the OCX icon to the main form and the icon HwaUSB appears.
- 6) In the program, we use the number attached to the form in HwaUSB.
i.e) HwaUSB1, HwaUSB2, HwaUSB3,...





※ For the usage examples, refer to the sample program that you can download from our website.